

Arnaldo BORDONI\*

New data on the Oriental Xantholinini. 55. New species from Nepal, Laos and Malaysia of the Naturhistorisches Museum of Wien (Coleoptera, Staphylinidae).

332<sup>nd</sup> contribution to the knowledge of Staphylinidae.

ABSTRACT

Nine species from Nepal, Laos, and Malaysia are described and illustrated (*Paratesba chamah* sp.n., *Paratesba ululalat* sp.n., *Thyrecephalus johor* sp., *Eulissus godavari* sp.n., *Eulissus ulusedili* sp.n., *Metolinus montanus* sp.n., *Metolinus phupan* sp.n., *Metolinus phongsalay* sp.n., and *Nepalinus phupan* sp.n.).

*Keywords:* Coleoptera, Staphylinidae, New species. *Paratesba*, *Thyrecephalus*, *Eulissus*, *Metolinus*, *Nepalinus*.

INTRODUCTION

This contribution is based on numerous specimens of the Natural History Museum of Wien which allow me to describe nine new species of Xantholinini (Coleoptera, Staphylinidae) belonging to five genera (*Paratesba*, *Thyrecephalus*, *Eulissus*, *Metolinus*, *Nepalinus*), increasing knowledge of the tribe in the Oriental Region. The genus *Eulissus*, as indicated elsewhere (Bordoni, 2025), replaces the genus *Achmonia* (Bordoni, 2004).

MATERIAL AND METHODS

Among the material sent to me by my colleague Harald Shillhammer I separated specimens from the Oriental Region. I was thus able to identify nine species new to science. The study was carried out with a Wild M5A stereo binocular and an Optika B-290 microscope. Acronyms: cB- coll. Bordoni, Firenze; NHMW: Natural History Museum Wien.

---

\* Museo di Storia Naturale, Firenze.

## TAXONOMIC LIST

### *Paratesba chamah* sp.n.

*Examined material.* Holotype ♀: West Malaysia, Kelatan, 70 km NW of Gua Musang, Mt Chamah, 1900 m, Kampong Perias, P. Cechovsky 17.IV-9.V.2014 (NHMW).

*Description.* Length of body: 19 mm; length from anterior margin of head to posterior margin of elytra: 12 mm. Black with red elytra and black scutellum; antennae and legs brown. Head small, sub-quadrangular, with parallel and sub-rectilinear sides. Head with a superficial carina from the eyes to the posterior margin. Eyes small and almost flat. Labrum as in Fig. 5. Surface of head with regular setiferous punctuation forming longitudinal series. Pronotum as long as head, anteriorly as wide as it, visibly narrow behind. Surface with deep punctuation near the anterior angles, more scattered behind, forming two anterior series. Elytra sub-rectangular, barely enlarged behind, with rectilinear sides and marked humeral angles. Surface with fine punctuation arranged in numerous series. Abdomen totally covered with numerous, deep, well visible punctuation.

*Etymology.* The specific epithet is the type locality, as a noun in apposition.

*Distribution.* The species is known only from the type locality.

*Remarks.* In Malaysia occurs also *P. emarginata* Bordoni, 2002 from Lengong (length of body: 22 mm; length from anterior margin of head to posterior margin of elytra: 12 mm) with different labrum.

### *Paratesba ululalat* sp.n.

*Examined material.* Holotype ♂: West Malaysia, Kelatan, 30 km NW of Gua Musang, Mt Ulu Lalat, 800-1000 m, Kampang Sungai Om, P. Cechovsky 21.VI-14.VII.2010 (NHMW).

*Description.* Length of body: 27 mm; length from anterior margin of head to posterior margin of elytra: 14 mm. Black with red elytra and black scutellum; antennae brown dark; legs brown with reddish tarsi. Head with a carina from the eyes to the posterior margin. Labrum as in Fig. 4. Eyes small and barely protruding. Surface of head with fine, setiferous punctures. Pronotum as long as head, visibly narrower than it, with marked anterior angles and very barely emarginated sides. Surface with numerous setiferous punctures near the anterior angles. Elytra sub-rectangular, longer and wider than pronotum, with marked humeral angles. Surface with fine setiferous punctures. Abdomen without micro-sculpture, with evident punctuation anteriorly and on the sides, more wide and deep than on forebody. Tergite and sternite of male genital segment as in Figs. 1-2. Aedeagus (Fig. 3) 3 mm long, ovoid, with short parameres; inner sac voluminous.

*Etymology.* The specific epithet is the type locality, as a noun in apposition.

*Distribution.* The species is known only from the type locality.

***Thyrecephalus johor* sp.n.**

*Examined material.* Holotype ♂: W Malaysia, Johor, 15 km NW Kota Tinggi, Muntahak Mt., 200 m, P. Cechovsky 7-13.III.2002 (NHMW).

*Description.* Length of body: 14 mm; length from anterior margin of head to posterior margin of elytra: 7 mm. Body black with reddish brown elytra; antennae and legs brown. Head roundish. Eyes small and almost flat. Surface of head with some minute punctuation behind the eyes; two setiferous punctures near the disc and one lateral behind the eyes. Pronotum shorter and narrower than head, very dilated anteriorly, with conspicuously emarginated sides and rounded anterior angles. Surface with one puncture near the anterior angles. Elytra sub-quadrangular with closely rounded humeral angles. Surface with very fine, scattered punctuation. Abdomen with few, fine punctuation on the sides. Tergite and sternite of male genital segment as in Figs. 6-7. Aedeagus (Fig. 8) 2 mm long, large, ovoid very elongated, with short parameres; inner sac long and narrow wrapped around itself.

*Etymology.* The specific epithet is the type locality, as a noun in apposition.

*Distribution.* The species is known only from the type locality.

*Remarks.* In Malaysia occur 4 *Thyrecephalus* (*T. laticeps* (Erichson, 1839); *T. indicus* (Fauvel, 1895); *T. nigricantis* Bordon, 2009; *T. elvus* Bordon, 2021). All differ in labrum and aedeagus. In particular *T. nigricantis* differs from the new species in size, color, labrum and aedeagus.

***Eulissus godavari* sp.n.**

*Examined material.* Holotype ♀: Nepal, Patan Distr., Godavari, C. Holzschuh 21-27.VI.1989 (NHMW).

*Description.* Length of body: 14 mm; length from anterior margin of head to posterior margin of elytra: 7 mm. Body shiny, head and pronotum black; elytra red; abdomen brown dark; scutellum black, with numerous punctures; antennae and legs brown. Labrum as in Fig. 10. Eyes small and flat. Surface of head with two setiferous punctures behind the eyes. Pronotum shorter than head, anteriorly barely narrower than it, with widely rounded anterior angles. Elytra sub-rectangular, moderately enlarged posteriorly, with marked humeral angles. Surface with numerous, fine punctures, arranged in numerous series. Abdomen with closed, well visible punctuation on all the surface of tergites.

*Etymology.* The specific epithet is the type locality, as a noun in apposition.

*Distribution.* The species is known only from the type locality.

*Remarks.* This species is the second *Eulissus* known from Nepal (the other is *E. eppelsheimi* (Bernhauer, & Schubert, 1914) different in size, color and labrum.

***Eulissus ulusedili* sp.n.**

*Examined material.* Holotype ♀: W Malaysia, Johor, 40 km N of Kota Tinggi, Kampong Ulu Sedili env., P. Cechovsky 23-28.III.2004 (NHMW).

*Description.* Length of body: 11.5 mm; length from anterior margin of head to posterior margin of elytra: 5 mm. Body black; antennae and legs brown dark. Head large, sub-quadrangular with sub-parallel sides and widely rounded posterior angles. Eyes medium-sized and barely protruding. Labrum as in Fig. 9. Surface of head with one setiferous puncture behind the eyes and some fine punctures on the disc and behind the eyes. Pronotum shorter and narrower than head, dilated anteriorly, with widely rounded anterior angles and emarginated sides. Surface with one puncture near the anterior angles. Elytra sub-quadrangular, with sub-rectilinear sides and marked humeral angles. Surface with one series of fine punctures near the suture and two median series. Abdomen with fine punctures on the sides.

*Etymology.* The specific epithet is the type locality, as a noun in apposition.

*Distribution.* The species is known only from the type locality.

*Remarks.* The new species differs from all the congeners by shape of labrum and color.

***Metolinus montanus* sp.n.**

*Examined material.* Holotype ♂: Nepal, Kathmandu Distr., Chaubas, 2200 m, C. Holzschuh 19.VI.1989 (NHMW).

*Description.* Length of body: 5 mm; length from anterior margin of head to posterior margin of elytra: 2.8 mm. Body black with antennae and legs yellowish. Head ovoid with rounded sides from the eyes to the neck. Eyes small and almost flat. Surface of head with fine, scattered punctuation. Pronotum as long as head and barely narrower than it, with rounded anterior angles and sub-rectilinear sides. Surface with dorsal series of 6-7 punctures and lateral series of 3 anterior punctures. Elytra sub-rectangular, barely dilated behind, with sub-rectilinear sides and rounded humeral angles. Surface with very fine, very scattered irregular punctuation. Abdomen without micro-sculpture, with very fine and scattered punctuation on the sides. Tergite and sternite of male genital segment as in Figs. 11-12. Aedeagus (Fig. 13) 0.50 mm, with short parameres; inner sac in the shape of a ribbon wound several times.

*Etymology.* The specific epithet is the Latin *montanus- a- um* (mountain).

*Distribution.* The species is known only from the type locality.

*Remarks.* In Nepal occur also other *Metolinus* (*M. nepalicus* Coiffait, 1975, *M. microparamerus* Coiffait, 1977, *M. montivagus* Bordoni, 2002, *M. jubing* Bordoni, 2017b, *M. lacustris* Bordoni, 2018) from which the new species differs especially by the structure of inner sac of the aedeagus.

***Metolinus phupan* sp.n.**

*Examined material.* Holotype ♂: NE Laos, Hua Phan Prov., Mt Phu Pan, 1500-1900 m, 20° 12.3'N, 104° 01'E, C. Holzschueh 12.V-3.VI.2007 (NHMW); paratype: 1 ♂ (NHMW), 1 ♂ (cB).

*Description.* Length of body: 7.5 mm; length from anterior margin of head to posterior margin of elytra: 4.5 mm. Body reddish brown dark. Head sub-quadrangular, with sub-

rectilinear sides and rounded posterior angles. Eyes small and almost flat. Surface of head with fine and scattered punctuation. Pronotum robust, as long and wide as head, with widely rounded anterior angles and sub-rectilinear sides. Surface with dorsal series of 7-8 punctures and lateral series of 2-3 posterior punctures. Elytra sub-rectangular, barely dilated behind, with rounded humeral angles and sub-rectilinear sides. Surface with very fine and scattered punctuation. Abdomen with traces of transverse micro-striation and fine punctuation on the sides.

Tergite and sternite of male genital segment as in Figs. 14-15. Aedeagus (Fig. 16) 0.45 mm long, with short parameres and inner sac with two long narrow structures.

*Etymology.* The specific epithet is the type locality, as a noun in apposition.

*Distribution.* The species is known only from the type locality.

***Metolinus phongsalay* sp.n.**

*Examined material.* Holotype ♂: Laos, Phongsalay prov., Phongsalay env., 1500 m, 21° 42.2'N, 102° 06.8'E, C. Holzschuh 6-17.V.2004 (NHMW).

*Description.* Length of body: 7.5 mm; length from anterior margin of head to posterior margin of elytra: 4 mm. Body brown dark; elytra with reddish reflexions; antennae and legs brown. Head ovoid, not narrow anteriorly, with sub-rectilinear sides and rounded posterior angles. Eyes large, almost flat. Pronotum robust, long and wide as head, with dorsal series of 7 punctures and lateral series of 4 punctures, all the punctures very fine. Elytra very long, longer and wider than pronotum, dilated behind, with rounded humeral angles. Scutellum very large. Surface of elytra with very fine, scattered punctuation, arranged in three irregular series, one near the suture, one median and one lateral. Abdomen with fine punctuation on the sides. Tergite and sternite of male genital segment as in Figs. 17-18. Aedeagus (Fig. 19) 0.60 mm long, with short parameres; inner sac with 5 spines.

*Etymology.* The specific epithet is the type locality, as a noun in apposition.

*Distribution.* The species is known only from the type locality.

*Remarks.* Two other species of *Metolinus* occur in Laos (*M. finettii* Bordon, 2017a and *M. laotianus* Bordon, 2010); from these taxa the new species differs especially by the structure of inner sac of the aedeagus.

***Metolinus johor* sp.n.**

*Examined material.* Holotype ♂: W Malaysia, Johor, 20 km S Mersing, 300 m, Jemaluang, P. Cechovsky 1-14.II.2003 (NHMW).

*Description.* Length of body: 4 mm; length from anterior margin of head to posterior margin of elytra: 2.5 mm. A very small species; body shiny, reddish brown with yellowish antennae and legs. Head sub-quadrangular with barely rounded sides. Eyes median-sized, moderately protruding. Surface of head without punctuation. Pronotum as wide as head, longer than it, with almost obsolete anterior angles and sub-rectilinear sides. Surface with dorsal series of 5 punctures and lateral series of 2 anterior punctures. Elytra barely long and wide as pronotum, dilated behind, with sub-rectilinear sides and rounded humeral angles.

Surface with few irregular punctures. Abdomen without micro-sculpture, with some punctures on the sides.

Tergite and sternite of male genital segment as in Figs. 20-21. Aedeagus (Fig. 22) 0.40 mm long, with very short parameres; inner sac with two long structure and with two distal spines.

*Etymology.* The specific epithet is the type locality, as a noun in apposition.

*Distribution.* The species is known only from the type locality.

***Nepalinus phupan* sp.n.**

*Examined material.* Holotype ♂: NE Laos, Hua Phan Prov., Mt Phu Pan, 1500-1900 m, C. Holzschuh 17.V-3.VI.2007 (NHMW).

*Description.* Length of body: 9 mm; length from anterior margin of head to posterior margin of elytra: 5 mm. Body reddish brown, with yellowish humera and yellow pale antennae and legs. Head ovoid, narrow behind, with rounded sides from eyes to neck. Eyes small and almost flat. Surface of head with few, fine and scattered punctures. Pronotum very narrow, barely longer than head, with obsolete anterior angles and emarginated sides. Surface with dorsal series of 6 punctures and lateral series of 4-5 punctures. Elytra dilated behind, conspicuously wider and longer than pronotum, with almost obsolete humeral angles and sub-rectilinear sides. Surface with few scattered punctures. Abdomen without micro-sculpture, with few punctures on the sides.

Male genital segment as in Fig. 23; sternite as in Fig. 24, partly membranous. Aedeagus (Fig. 25) 0.55 mm long, with asymmetric, long pseudo-parameres; inner sac with a big spine between two series of scales.

*Etymology.* The specific epithet is the type locality, as a noun in apposition.

*Distribution.* The species is known only from the type locality.

*Remarks.* This species is the first *Nepalinus* from Laos. This genus is known from the indian sub-region (Nepal, North India, Sikkim, Assam) and sino-indian sub-region (Burma, North Thailand) (Bordoni, 2002).

#### ACKNOWLEDGEMENTS

Special thanks to Dr. Harald Schillhammer (Natural History Museum, Wien) for sending me the interesting material.

## RIASSUNTO

*Nuovi dati sugli Xantholinini orientali. 55. Nuove specie provenienti da Nepal, Laos e Malaysia del Naturhistorisches Museum di Vienna (Coleoptera, Staphylinidae). 332° contributo alla conoscenza degli Staphylinidae.*

Nove specie di Nepal, Laos, Malaysia sono descritte ed illustrate (*Paratesba chamah* sp.n., *Paratesba ululalat* sp.n., *Thyrecephalus johor* sp., *Eulissus godavari* sp.n., *Eulissus ulusedili* sp.n., *Metolinus montanus* sp.n., *Metolinus phupan* sp.n., *Metolinus phongsalay* sp.n., and *Nepalinus phupan* sp.n.).

*Parole chiave:* Coleoptera, Staphylinidae, Nuove specie. *Paratesba, Thyrecephalus, Eulissus, Eulissus, Metolinus, Nepalinus.*

Arnaldo BORDONI

Museo di Storia Naturale dell'Università di Firenze

Sezione di Zoologia "La Specola"

Via Romana, 17

I-50125 FIRENZE

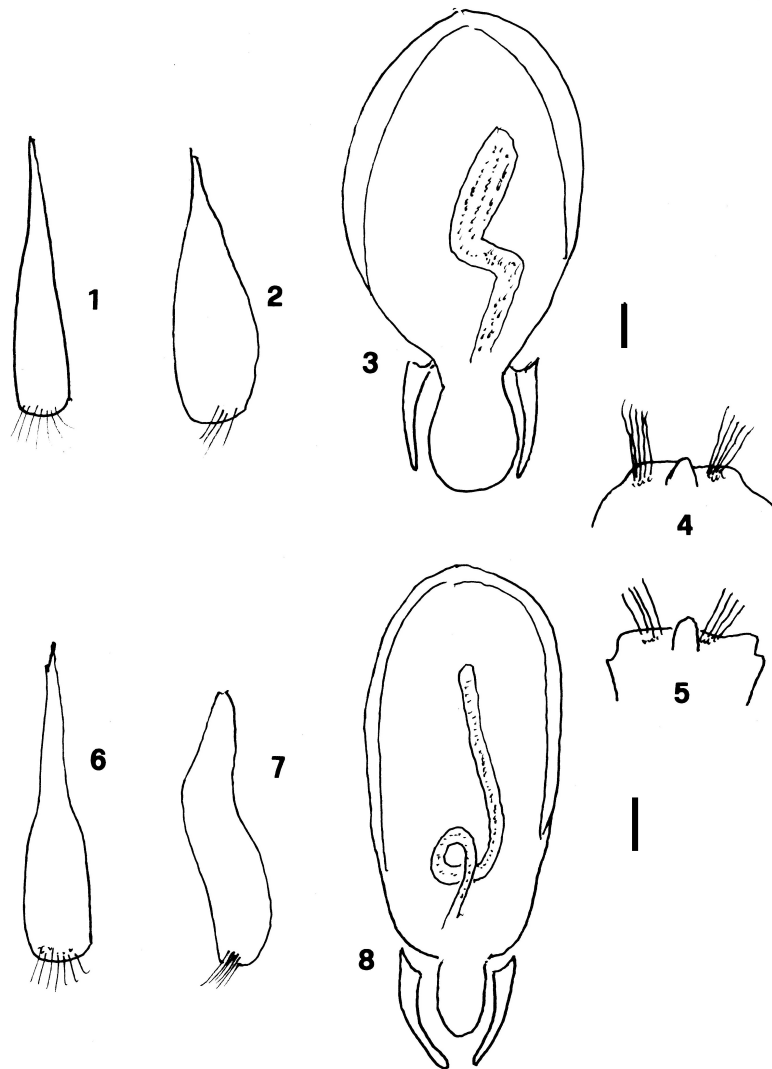
ITALY

arnaldo.bordoni38@gmail.com

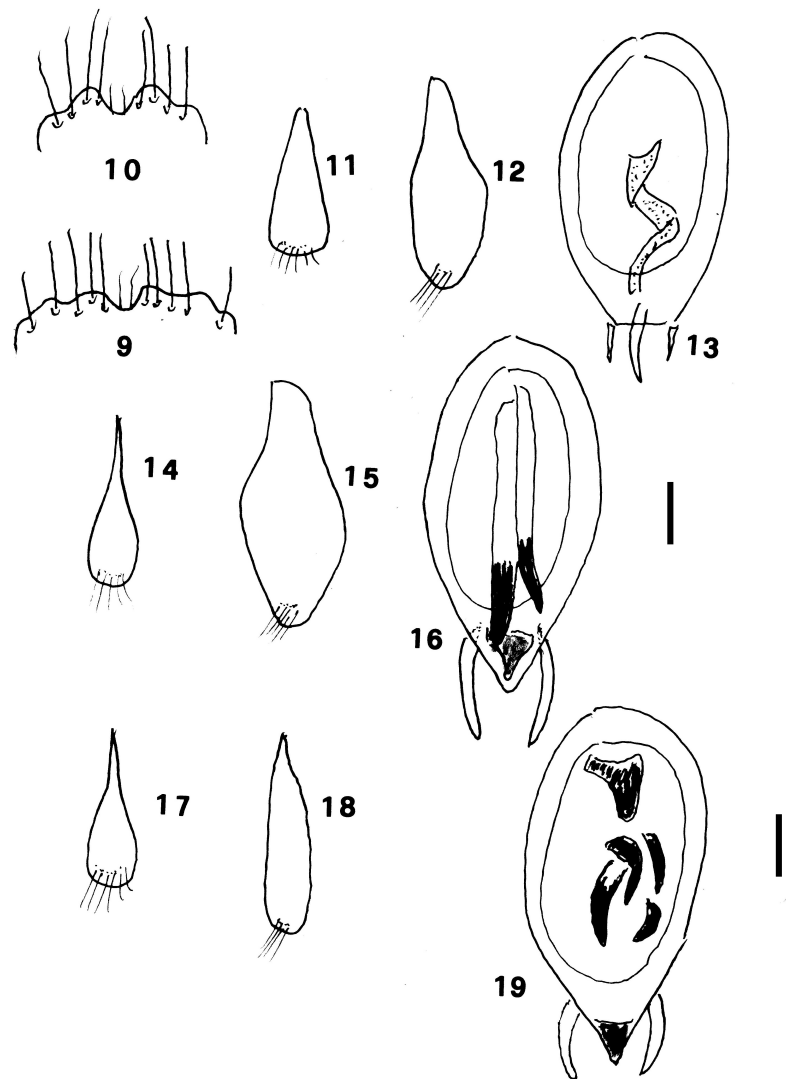
## REFERENCES

- BERNHAEUER M., SCHUBERT K., 1914. Staphylinidae. - In S. Schenkling. - *Coleopterorum Catalogus*, 5 (19): 1-86.
- BORDONI A., 2002. Xantholinini della Regione Orientale (Coleoptera: Staphylinidae). Classificazione, filogenesi e revisione tassonomica. - Monografie, Museo regionale di Scienze naturali, Torino, 33: 998 pp.
- BORDONI A., 2009. Xantholinini della Cina, della Regione Orientale e dell'Australia. Nuove specie e nuovi dati geonemici (Coleoptera, Staphylinidae). - *Fragmenta entomologica*, 41 (1): 87-111.
- BORDONI A., 2010. New data on the Xantholinini from the Oriental Region. XXII. New species from Laos (Coleoptera, Staphylinidae). - *Linzer biologische Beiträge*, 42 (1): 523-528.
- BORDONI A., 2017a. New data on the Xantholinini from the Oriental Region. 39. New species and new records from the Philippines (Coleoptera, Staphylinidae). - *Bollettino della Società entomologica italiana*, 149 (1): 33-44.
- BORDONI A., 2017b. New data on the Xantholinini from the Oriental Region. 44. New species and records from Nepal, Malaysia, Vietnam, Philippines, Sumatra, and Sabah (Coleoptera, Staphylinidae). - *Contributions to Entomology*, 67 (2): 255-264.
- BORDONI A., 2018. New data on the Xantholinini from the Oriental Region. New species and new records from North India and Nepal in the Naturhistorisches Museum Basel (Insecta: Coleoptera: Staphylinidae). - In: Hartman, Barclay & Weipert. *Biodiversität und Naturlausstattung im Himalaya*, VI: 379-388.
- BORDONI A., 2021. New data on the Oriental Xantholinini. 51. New species mostly from the Naturhistorisches Museum Wien collection (Coleoptera, Staphylinidae). - *Annales Naturhistorisches Museum Wien*, B, 133: 5-23.

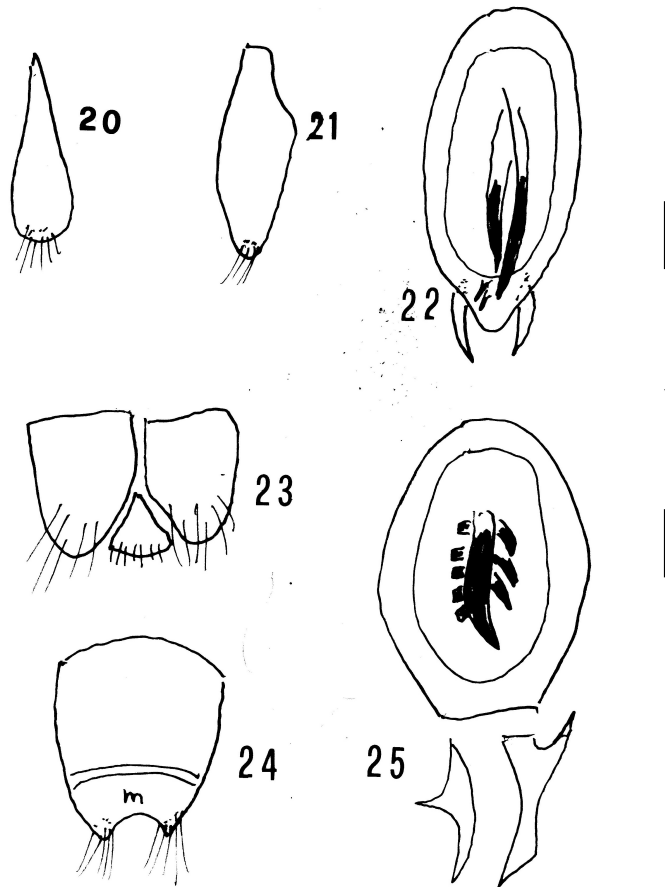
- BORDONI A., 2025. On some species of Xantholinini from Mexico and South America, description of two new genera and fourteen new species, new combination and new synonymy (Coleoptera, Staphylinidae). - *Redia*, 108: 11-26.
- COIFFAIT H., 1975. Xantholininae, Paederinae et Euesthetinae récoltés au Népal par le professeur Franz (Coleoptera, Staphylinidae). *Bulletin de la Société d'Histoire naturelle, Toulouse*, 112 (3-4): 243-275.
- COIFFAIT H., 1977. Ergebnisse der Bhutan-Expedition 1972 des Naturhistorischen Museum in Basel, Coleoptera: Fam. Staphylinidae Subfam. Xantholininae et Staphylininae. - *Entomologica Basiliensia*, 2: 205-242.
- ERICHSOHN W. F., 1839. Genera et species Staphylinorum insectorum coleopterorum familiae (1). - Morin, Berlin: 1-400.
- FAUVEL A., 1895. Staphylinides nouveaux de l'Inde et de la Malaisie. - *Revue d'Entomologie*: 180-286.



Figs 1-8. Tergite and sternite of male genital segment (1-2), aedeagus (3) of *Paratesba ululata* sp.n.; labreum of *Paratesba ululata* sp.n. (4) and *Paratesba chamah* sp.n. (5); Tergite and sternite of male genital segment (6-7) and aedeagus (8) of *Thyrecephalus johor* sp.n.



Figs 9-19. Labrum of *Eulissus ulusedili* sp.n. (9) and *Eulissus godavari* sp.n. (10); tergite and sternite of male genital segment (11-12) and aedeagus (fig. 13) of *Metolinus montanus* sp.n.; tergite and sternite of male genital segment (14-15) and aedeagus (16) of *Metolinus phupan* sp.n.; tergite and sternite of male genital segment (17-18) and aedeagus (19) of *Metolinus phongsalay* sp.n.



Figs 20-25. Tergite and sternite of male genital segment (20-21), and aedeagus (22) of *Metolinus johor* sp.n.