

Arnaldo BORDONI*

New data on the Australasian Xantholinini (Coleoptera, Staphylinidae, Xantholininae)

13. Two new species of *Metolinus* from New Guinea of the Manchester Museum and new records

305° contribution to the knowledge of the Staphylinidae

ABSTRACT

The following new species from New Guinea are described and illustrated: *Metolinus albipes* n.sp. and *Metolinus pertinax* n.sp. (Coleoptera, Staphylinidae, Xantholininae). Some new records are listed. *Thyreocephaus aureus* Bernhauer, 1915 is new record for Halmahera Island.

Keywords: Coleoptera, Staphylinidae, Xantholinini, new species. *Metolinus*, Papua New Guinea.

INTRODUCTION

This is the thirteenth contribution to the knowledge of Australasian Xantholinini. The study of New Guinea specimens belonging to the Last collection (Manchester Museum, UK), allows me to describe two new species of *Metolinus* Cameron, 1950. These new taxa enrich the scarce diversity of this genus on the island, otherwise very abundant in the neighbouring Oriental Region (more than 80 taxa) (Bordoni, 2002, and following contributions). These new taxa were already recognised by Last himself, but never described (left *in litteris*). Thanks to the kind and fundamental collaboration of Dmitri Logunov of the Manchester Museum, the meager data on the labels have been completed by the indications present in the notebooks of the same Last.

MATERIAL AND METHODS

The specimens object of this contribution have been sent to me in study by the museums of Basel (Switzerland), Bruxelles (Belgium), Erfurt (Germany) and Manchester (UK).

* Museo di Storia Naturale, Firenze

The acronyms adopted are indicated follow: cB: coll. Bordoni, Florence, Italy; cT: coll. Dmitry Telnov, Dzidrinās, Latvia; IRSNB: Institut Royal d'Histoire Naturelle, Bruxelles, Belgium (Yvonnick Gerard); MMUE: Manchester Museum, UK (Dmitri Logunov); NHMB: Natural History Museum, Basel, Switzerland (Matthias Borer); NME: Naturkundemuseums Erfurt, Germany (Matthias Hartmann).

The specimens were examined using a Wild M5A binocular and an Optika B-290 triocular microscope.

TAXONOMY (in systematic order)

Thyrecephalus albertisi (Fauvel, 1877)

Examined material. Australia, QSL, Magnetic Isl., coll. unknown 25-26.XII....(unreadable), 1 ex. (cB).

Distribution. The species is known from Australia (Bordoni, 2005), New Guinea, New Britain, Moluccas Isl. (Key, Ambon, Aru, Palau Vokam, Buru), Banda Isl. (Banda, Larat), Sulawesi, Borneo, Philippines (Bordoni, 2002).

Thyrecephalus flavus Last, 1980

Examined material. W Papua, 50 km SE Kaimana, Triton bay, vic. Kamaka, 3°49'50''S, 134°11'27''E, 10-50 m, A. Skale 2-5.II.2011, 2 exx. (NME), 1 ex. (cB); W Papua, Fak-Fak peninsula, Fak-Fak, 5-7 km N, 2°53'26''S, 132°18'22''E, 300-400 m, primeval low rainforest, D. Telnov 23-25.IX.2010, 1 ex. (cT).

Distribution. This species is known only from Irian Jaya and Papua New Guinea (Bordoni, 2010).

Thyrecephalus aureus Bernhauer, 1915

Examined material. S Halmahera Isl., 2-3 km N Dolik, Dolik river, 0°15'49''S, 127°42'40''E, A. Weigel 15.I.2006 1 ex. (NME).

Distribution. Irian Jaya, Papua New Guinea, Fergusson Isl., Normanby Isl, New Britain (Bordoni, 2010). New record for Halmahera Island.

Metolinus albipes n.sp.

(Figs 1-3, 7)

Examined material. Holotype ♂: Papua New Guinea, Star Mts, Bulten, 5000 ft, R, Hornabrook 22.X.1975 (MMUE).

Description. Length of body 5 mm; from anterior margin of head to posterior margin of elytra: 2.4 mm. Body (Fig. 7) black, with yellowish posterior margin of elytra; antennae

light brown; legs brown-black, with yellowish tibiae and tarsi. Head sub-quadrangular, with slightly rounded sides and widely rounded posterior angles. Eyes large and very protruding. Surface of the head shiny, with few setiferous punctures. Pronotum sub-rectangular, moderately dilated anteriorly, longer and narrower than head, with very oblique anterior margins, almost obsolete anterior angles and slightly sinuate sides. Surface with dorsal series of 5 scattered punctures and lateral series of 2-3 fine, anterior punctures. Elytra exceptionally long, sub-rectangular, very longer and wider than pronotum, with sub-parallel sides and rounded humeral angles. Surface with very fine, very scattered punctation, arranged in three less evident series, one juxtasutural, one median and one lateral. Abdomen with traces of fine, transverse micro-striation, polygonal at the base of the segments, and with very fine, sparse punctation on the sides. Tergite and sternite of the male genital segment as in Figs 1-2. Aedeagus (Fig. 3) ovoid elongate, 0.74 mm long; inner sac with some long spines.

Etymology. The specific epithet is the Latin *albus- a- um* (yellow) and *pes- pedis* (legs).

Distribution. The species is known only from the type locality.

Remarks. The holotype bears the labels “Manchester Museum / paratype” (printed), “*Metolinus oculatus* Last/ H. R. Last det./ Paratype”, “Paratype” (on white, round label, with yellow edge). *Metocinus oculatus* Last was not published, so it is *in litteris*. The new species is similar in general appearance to *M. montanus* Bordoni, 2010 (Papua New Guinea: Chimbu Puv.) and differs from all the known *Metolinus* by the structure of the inner sac of the aedeagus. *Metolinus albipes* resembles in general aspect *M. elegantissimus* Bordoni, 2010 (Irian Jaya: Paniai), to *M. canopyanus* Bordoni, 2010 from Papua New Guinea (Morobe Prov.) and to *M. oculatus* Bordoni, 2010 (Papua New Guinea: Onerunka) for the yellow tibiae and tarsi.

***Metolinus pertinax* n.sp.**

(Figs 4-6, 8)

Examined material. Holotype ♂: New Guinea, Daullo Pass, R. Hornabrook 31.XII.1991 (MMUE); paratype, same data, R. Hornabrook 25.IV.1971, 1 ♂ (cB).

Description. Length of body 4.8 mm; from anterior margin of head to posterior margin of elytra: 2.6 mm. Body (Fig. 8) reddish brown black, with yellowish posterior margin of elytra; antennae with brown light first segment and yellowish following antennomeres; legs brown with yellowish tibiae and tarsi. Head ovoid, dilated posteriorly, with slightly rounded sides and widely rounded posterior angles. Eyes medium-sized and protruding. Surface of head with traces of fine, transverse micro-striation and few, setiferous punctures. Pronotum sub-rectangular, moderately narrow posteriorly, longer and wider than head, with oblique anterior margins, widely rounded anterior angles and not sinuate sides. Surface with transverse micro-striation; dorsal series of 2 anterior and 3 posterior punctures and lateral series of 3 finer punctures. Elytra large, evidently longer and wider than pronotum, dilated posteriorly, with marked humeral angles. Surface with very fine, very spaced punctation, arranged in three less evident series, one juxtasutural, one median and one lateral. Abdomen with fine, more or less transverse micro-striation and fine, very sparse punctation on the sides. Tergite and sternite of the male genital segment as in Figs 4-5. Aedeagus (Fig.

6) ovoid elongate, 0.92 mm long; inner sac with numerous long spines, the last three visibly arched.

Etymology. The specific epithet is the Latin *pertinax-nacis* (headstrong).

Distribution. The species is known only from the type locality.

Remarks. The paratype of this species bears the labels “Paratype”, “*Metolinus pertinax* sp.n. Last”. *Metolinus pertinax* Last was not published, so it is in litteris. I used the name chosen by Last. The new species is related to *M. oculatus* Bordon, 2010 (Papua New Guinea: Onerunka) due to structure of the inner sac of the aedeagus. Daulo Pass (2474 m) and not Daullo as on the label, is a locality in Papua New Guinea, E Highlands, near Kindeimorofa.

Linosomus socius (Fauvel, 1877)

Examined material. Australia, VIC, Melbourne, Clayton, P. Zwick VIII.1972, 1 ex. (IRSNB).

Distribution. Australia (Bordon, 2005), New Zealand (Bordon, 2005 a: introduced), South Africa (Bordon, 2016).

Phacophallus papuensis (Fauvel, 1878)

Examined material. Irian Jaya, Sentani Lake, 300 m, J. Kolibak III.1992, 1 ex. (NHMB).

Distribution. This species is known from Sumatra, Bali, Lombok, Sumbawa, Borneo, Papua and Solomon Isl. [Bordon, 2002 (sub *P. wailimae* n.sp.), 2010].

ACKNOWLEDGEMENTS

I thank the listed colleagues that sent me the studied material and in particular for the useful collaboration D. Logunov and D. Telnov. My thanks also to S. Cuoco (Livorno) for the nice photographs

RIASSUNTO

Nuovi dati sugli Xantholinini australasiatici (Coleoptera, Staphylinidae, Xantholininae). 13. Due nuove specie di Metolinus dalla Nuova Guinea del Museo di Manchester e nuove segnalazioni. 305° contributo alla conoscenza degli Staphylinidae

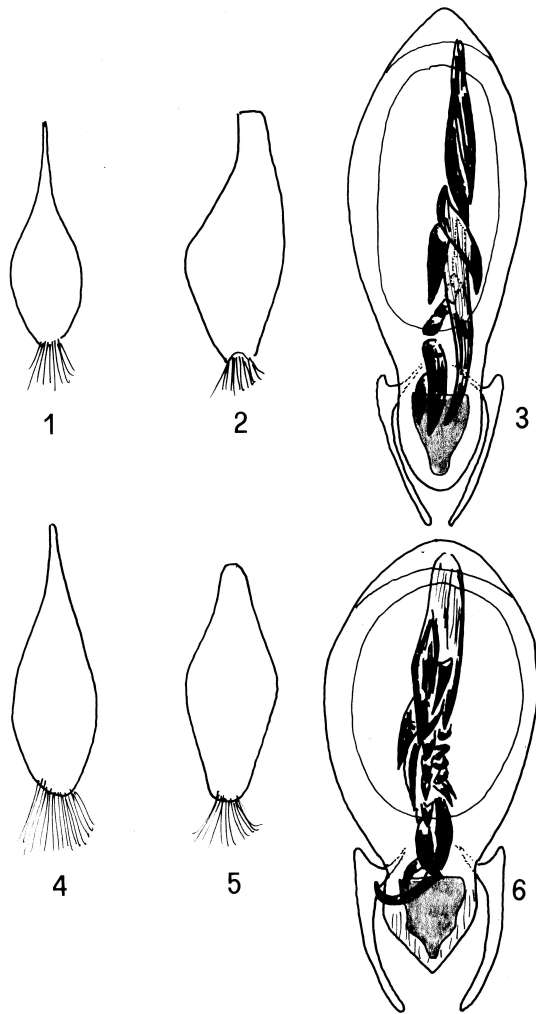
Vengono descritte e illustrate le seguenti nuove specie della Nuova Guinea: *Metolinus albipes* n.sp. e *Metolinus pertinax* n.sp. (Coleoptera, Staphylinidae, Xantholininae). Sono elencate alcune nuove segnalazioni. *Thyreocephaus aureus* Bernhauer, 1915 è nuova segnalazione per l'Isola di Halmahera.

Keywords: Coleoptera, Staphylinidae, Xantholinini, new species. *Metolinus*, Papua New Guinea.

Araldo BORDONI
Museo di Storia Naturale dell'Università degli Studi di Firenze
sezione di Zoologia "La Specola"
Via Romana, 17
I-50125 FIRENZE
Italy
arnaldo.bordoni38@gmail.com

REFERENCES

- BORDONI A., 2002. Xantholinini della Regione Orientale (Coleoptera: Staphylinidae). Classificazione, filogenesi e revisione tassonomica. - Memorie del Museo Regionale di Scienze Naturali, Torino, 33.
- BORDONI A., 2005. Revision of the Xantholinini of Australia (Coleoptera, Staphylinidae). - Monografie del Museo Regionale di Scienze Naturali, Torino, 42: 435-614.
- BORDONI A., 2005 a. Revisione degli Xantholinini della Nuova Zelanda (Coleoptera, Staphylinidae). - Bollettino del Museo Regionale di Scienze Naturali, Torino, 22: 329-442.
- BORDONI A., 2010. Revisione degli Xantholinini della Nuova Guinea e delle isole austromalesi (Coleoptera: Staphylinidae). - Bollettino del Museo Regionale di Scienze Naturali, Torino, 27, 2: 253-635.
- CAMERON M., 1920. New species of Staphylinidae from India (1). - The Entomologist's Monthly Magazine, London, 56, 6: 141-148.
- FAUVEL A., 1877. Les Staphylinides de l'Australie et de la Polynésie (2e mém.). - Annali del Museo civico di Storia naturale di Genova, 13: 465-598.
- FAUVEL A., 1878. Les Staphylinides des Moluques et de la Nouvelle Guinée. - Annali del Museo civico di Storia naturale di Genova, 12: 171-315.



Figs 1-3. Tergite (1) and sternite (2) of the male genital segment, aedeagus (3) of *Metolinus albipes* n.sp. (scale bar: 0.1 mm).

Figs 4-6. Tergite (4) and sternite (5) of the male genital segment, aedeagus (6) of *Metolinus pertinax* n.sp. (scale bar: 0.1 mm).



7



8

Figs 7-8. Habitus of *Metolinus albipes* n.sp. (total length 5 mm) (7) and *M. pertinax* n.sp. (total length 4.8 mm) (8) (photography by S. Cuoco).